

VERSA-BELL RACK

Owner's Manual

Safety Instructions
Customer Service
Operation
Warranty

SAFETY INSTRUCTIONS

WARNING: To reduce the risk of serious injury, read the following Safety Instructions before using the **VERSA-BELL**.

1. The **VERSA-BELL RACK** is for use with **VERSA-BELL** products produced by Stamina Products, Inc. Do not use the **VERSA-BELL RACK** with products not produced by Stamina Products, Inc.
2. Read the Owner's Manual and follow it carefully before using the **VERSA-BELL**.
3. Keep children away from the **VERSA-BELL**. Do not allow children to use or play around the **VERSA-BELL**. Keep children and pets away from the **VERSA-BELL** when it is in use.
4. Make sure the **VERSA-BELL** is resting properly in the Weight Tray.
5. Never adjust the Weight Selector when the **VERSA-BELL** is not in the Weight Tray.
6. Inspect the **VERSA-BELL** for damaged or loose components prior to use.
7. Tighten/replace any loose or worn components prior to using the **VERSA-BELL**.
8. Before exercising, make sure both Weight Selectors which secure the Weight Plates are locked in position properly. Falling Weights can result in severe injury.
9. Consult a physician prior to commencing an exercise program. If, at any time during exercise, you feel faint, dizzy, or experience pain, stop and consult your physician.
10. Always choose the workout which best fits your physical strength and flexibility level. Know your limits and train within them. Always use common sense when exercising.
11. Do not wear loose or dangling clothing while using the **VERSA-BELL**.
12. The **VERSA-BELL** is for consumer use only. It is not for use in public or semipublic facilities.

This Product is Produced Exclusively by



2040 N. Alliance, Springfield, MO 65803

Customer Service Number

1 (800) 375-7520

parts@staminaproducts.com

www.staminaproducts.com

When calling for parts or
service, please specify the
following number:

10 - 0016

MADE IN CHINA

© 2004 Stamina Products, Inc.

Assembly Instructions

Place all parts from the box in a cleared area and position them on the floor in front of you. Remove all packing materials from your area and place them back into the box. Do not dispose of the packing materials until assembly is completed. Read each step carefully before beginning. If you are missing a part please call our toll-free number for assistance **1 (800) 375-7520** or e-mail us at: **parts@staminaproducts.com**

THE FOLLOWING TOOLS ARE INCLUDED FOR ASSEMBLY :



Allen Wrench (5mm)



Wrench

STEP 1

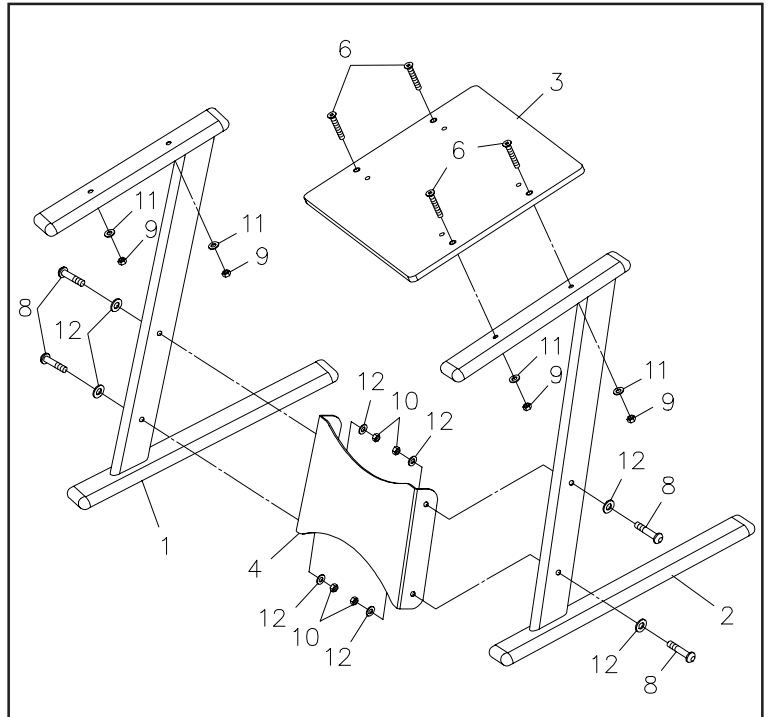
Attach the **CONNECTION PLATE(4)** onto the **LEFT and RIGHT MAIN FRAMES(1, 2)** with **BOLTS(M8 x 35mm)(8)**, **WASHERS(M8)(12)**, and **NYLOCK NUTS (M8)(10)**.

NOTE:

1. The top surface of the **LEFT and RIGHT MAIN FRAMES(1, 2)** should be assembled so that they provide a flat mounting surface for the **PLATFORM(3)**.
2. **DO NOT TIGHTEN BOLTS UNTIL ALL PARTS ARE IN CORRECT POSITION.**

STEP 2

Attach the **PLATFORM(3)** onto the **LEFT and RIGHT MAIN FRAMES(1, 2)** with **BOLTS (M6 x 40mm)(6)**, **WASHERS(M6)(11)**, and **NYLOCK NUTS(M6)(9)**. Tighten all of the **BOLTS**.



INSTALL THE VERSA-BELL

The **VERSA-BELL RACK** is available to attach two sets of **VERSA-BELL** on it. Simply follow the following assembly instructions to install your **VERSA-BELL** sets onto the **VERSA-BELL RACK**.

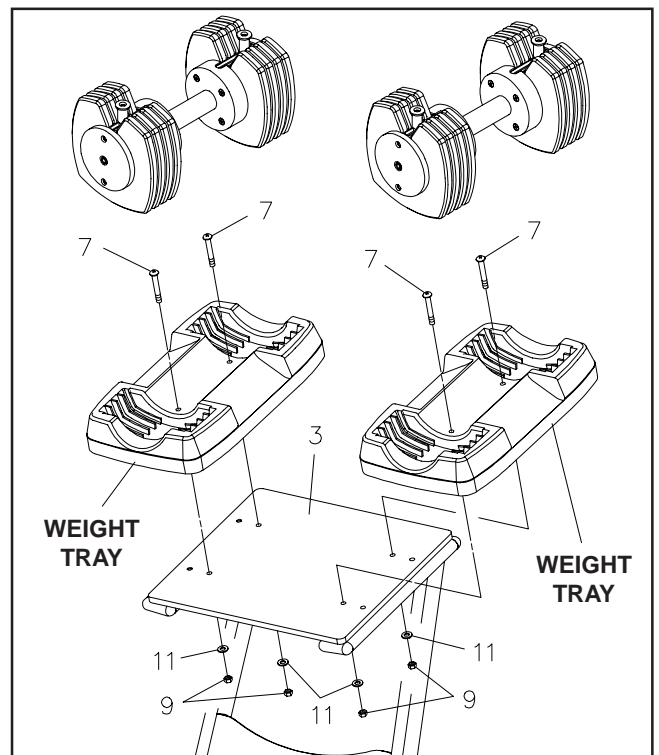
NOTE: The **VERSA-BELL** sets are not included with the **VERSA-BELL RACK**.

STEP 3

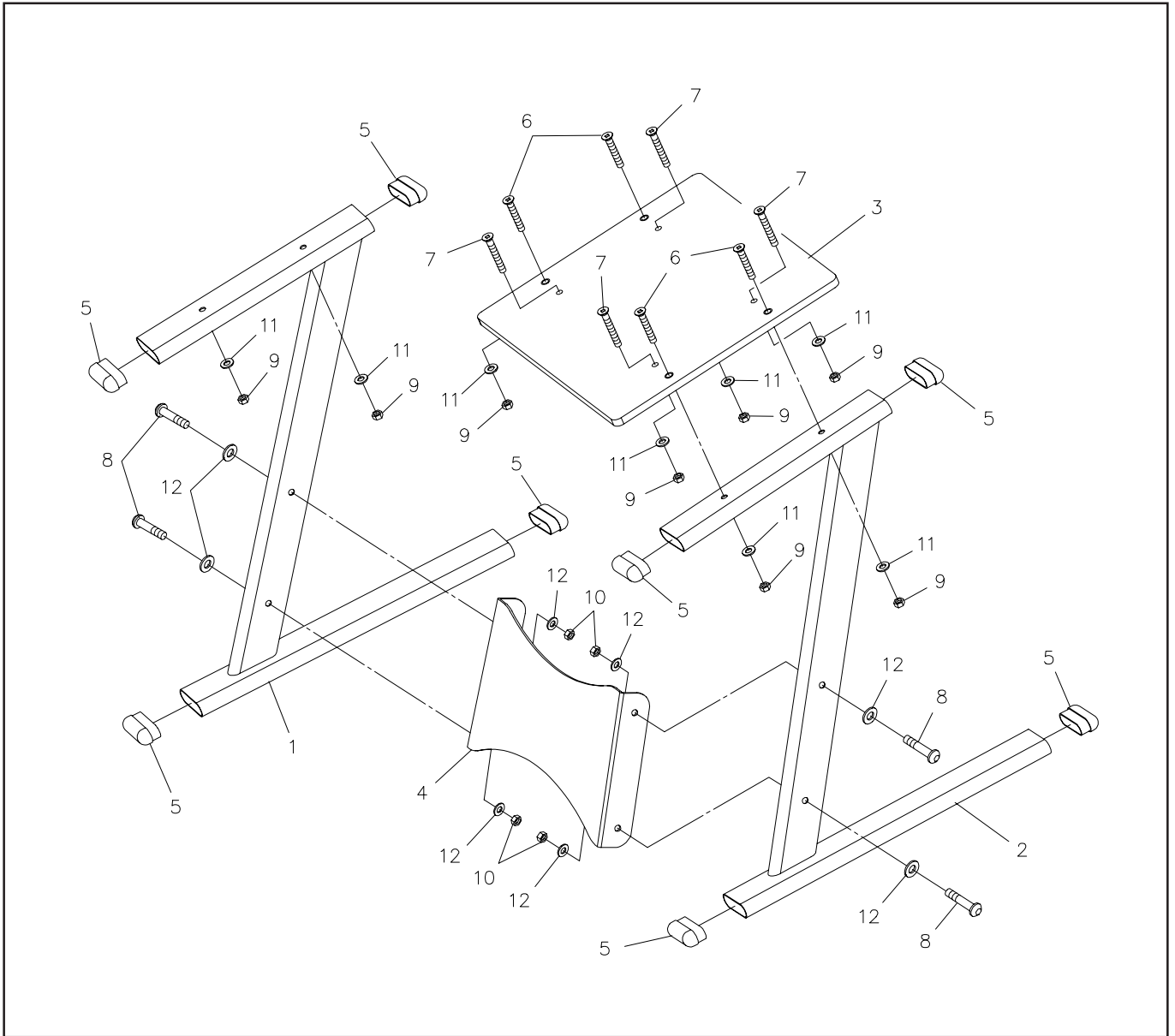
Attach the **WEIGHT TRAYS** onto the **PLATFORM(3)** with **BOLTS(M6 x 50mm)(7)**, **WASHERS(M6)(11)**, and **NYLOCK NUTS(M6)(9)**.

STEP 4

Properly place the **VERSA-BELL SETS** into the **WEIGHT TRAYS**.



Product Parts Drawing and Parts List



Part No. and Description

1	Left Main Frame	1
2	Right Main Frame	1
3	Platform	1
4	Connection Plate	1
5	Oval Plug (20mm x 40mm)	8
6	Bolt, Flat Head (M6 x 1 x 40mm)	4
7	Bolt, Flat Head (M6 x 1 x 50mm)	4
8	Bolt, Button Head (M8 x 1.25 x 35mm)	4

Qty

Part No. and Description

9	Nylock Nut (M6 x 1)	8
10	Nylock Nut (M8 x 1.25)	4
11	Washer (M6)	8
12	Washer (M8)	8
13	Allen Wrench (5mm)	1
14	Wrench	1
15	Manual	1

Qty

LIMITED WARRANTY

MODEL 10-0016

WARRANTY

Stamina Products, Inc. warrants that this product will be free from defects in materials and workmanship under normal use, service and proper operation for a period of 90 days on the parts and the frame from the date of the original purchase from an authorized retailer. **THIS WARRANTY SHALL NOT APPLY TO ANY PRODUCT WHICH HAS BEEN SUBJECT TO COMMERCIAL USE, ABUSE, MISUSE, ALTERATION OF ANY TYPE OR CAUSE OR TO ANY DEFECT OR DAMAGE CAUSED BY REPAIR, REPLACEMENT, SUBSTITUTION OR USE WITH PARTS OTHER THAN PARTS PROVIDED BY STAMINA PRODUCTS, INC.** Commercial use includes use of the product in athletic clubs, health clubs, spas, gymnasiums, exercise facilities, and other public or semipublic facilities whether or not the product's use is in furtherance of a profit making enterprise, and all other use which is not for personal, family, or household purposes.

To implement this limited warranty, send a written notice stating your name, date, and place of purchase and a brief description of the defect along with your receipt to **Stamina Products, Inc. P.O. Box 1071, Springfield Missouri, USA, 65801-1071** or call us at **1 (800) 375-7520**. If the defect is covered under this limited warranty, you will be requested to return the product or part to us for free repair or replacement at our option. **NO ACTION FOR BREACH OF THIS LIMITED WARRANTY MAY BE COMMENCED MORE THAN ONE (1) YEAR AFTER THE DATE THE ALLEGED BREACH WAS OR SHOULD HAVE BEEN DISCOVERED. NO ACTION FOR BREACH OF ANY IMPLIED WARRANTY MAY BE COMMENCED MORE THAN ONE (1) YEAR AFTER DELIVERY OF THE PRODUCT TO THE PURCHASER.** This limited warranty is not transferable. **IF ANY PART OF THE PRODUCT IS NOT IN COMPLIANCE WITH THIS LIMITED WARRANTY OR ANY IMPLIED WARRANTY, THE REMEDY OF REPAIR OR REPLACEMENT IS THE EXCLUSIVE REMEDY AVAILABLE TO YOU.** In the event that the purchaser makes any claim under this limited warranty or any implied warranty, the Warrantor reserves the right to require the product to be returned for inspection, at the purchaser's expense, to the Warrantor's premises in Springfield, Missouri. Return of the enclosed warranty registration card is not required for warranty coverage, but is merely a way of establishing the date and place of purchase.

Stamina Products, Inc. **SHALL NOT BE LIABLE FOR THE LOSS OF USE OF ANY PRODUCT, LOSS OF TIME, INCONVENIENCE, COMMERCIAL LOSS OR ANY OTHER INDIRECT, CONSEQUENTIAL, SPECIAL OR INCIDENTAL DAMAGES DUE TO BREACH OF THE ABOVE WARRANTY OR ANY IMPLIED WARRANTY.**

This limited warranty is the only written or express warranty given by Stamina Products, Inc. This warranty gives you specific legal rights, and you may also have other legal rights which vary from state to state. **ANY OTHER RIGHT WHICH YOU MAY HAVE, INCLUDING ANY IMPLIED WARRANTY OR MERCHANTABILITY OR FITNESS FOR A PARTICULAR PURPOSE, IS LIMITED IN DURATION TO THE DURATION OF THIS WARRANTY.**

The laws in some jurisdictions restrict the rights of manufacturers and distributors of consumer goods to disclaim or limit implied warranties and consequential and incidental damages with respect thereto. If any such law is found to be applicable, the foregoing disclaimers and limitations of and on implied warranties and consequential and incidental damages with respect thereto shall be disregarded and shall be deemed not to have been made to the extent necessary to comply with such legal restriction.